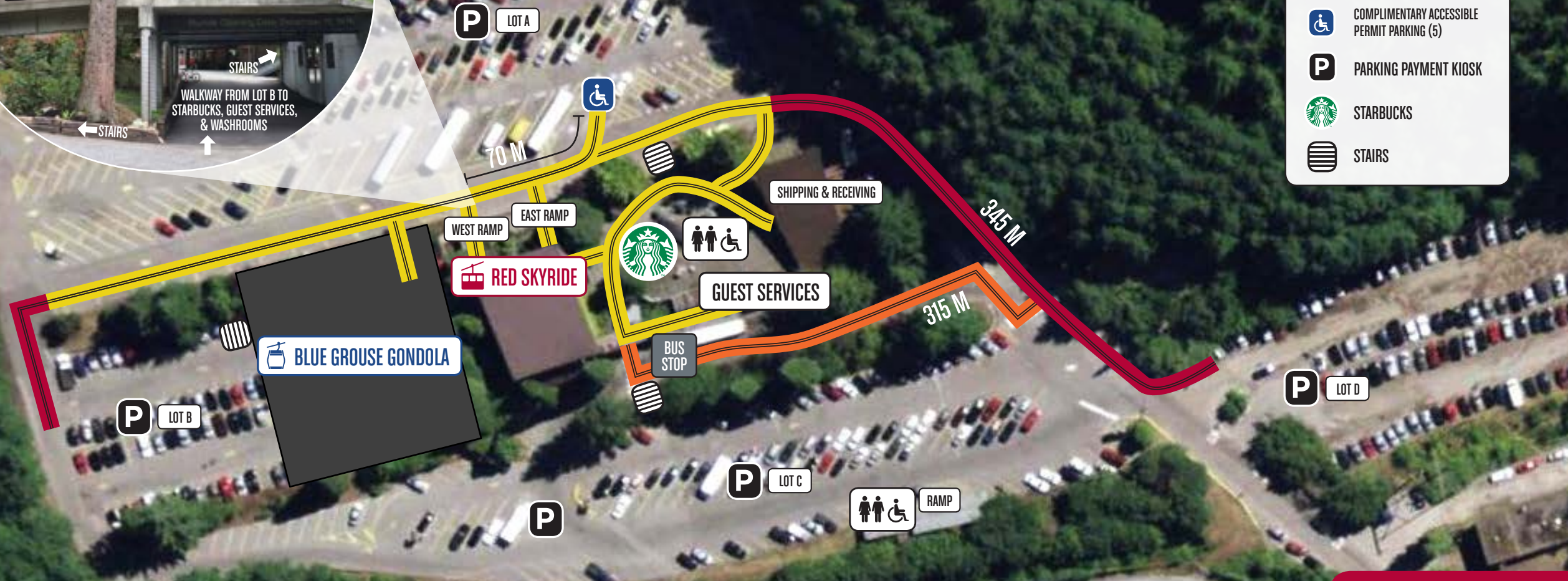


BASE ACCESSIBILITY & PARKING MAP



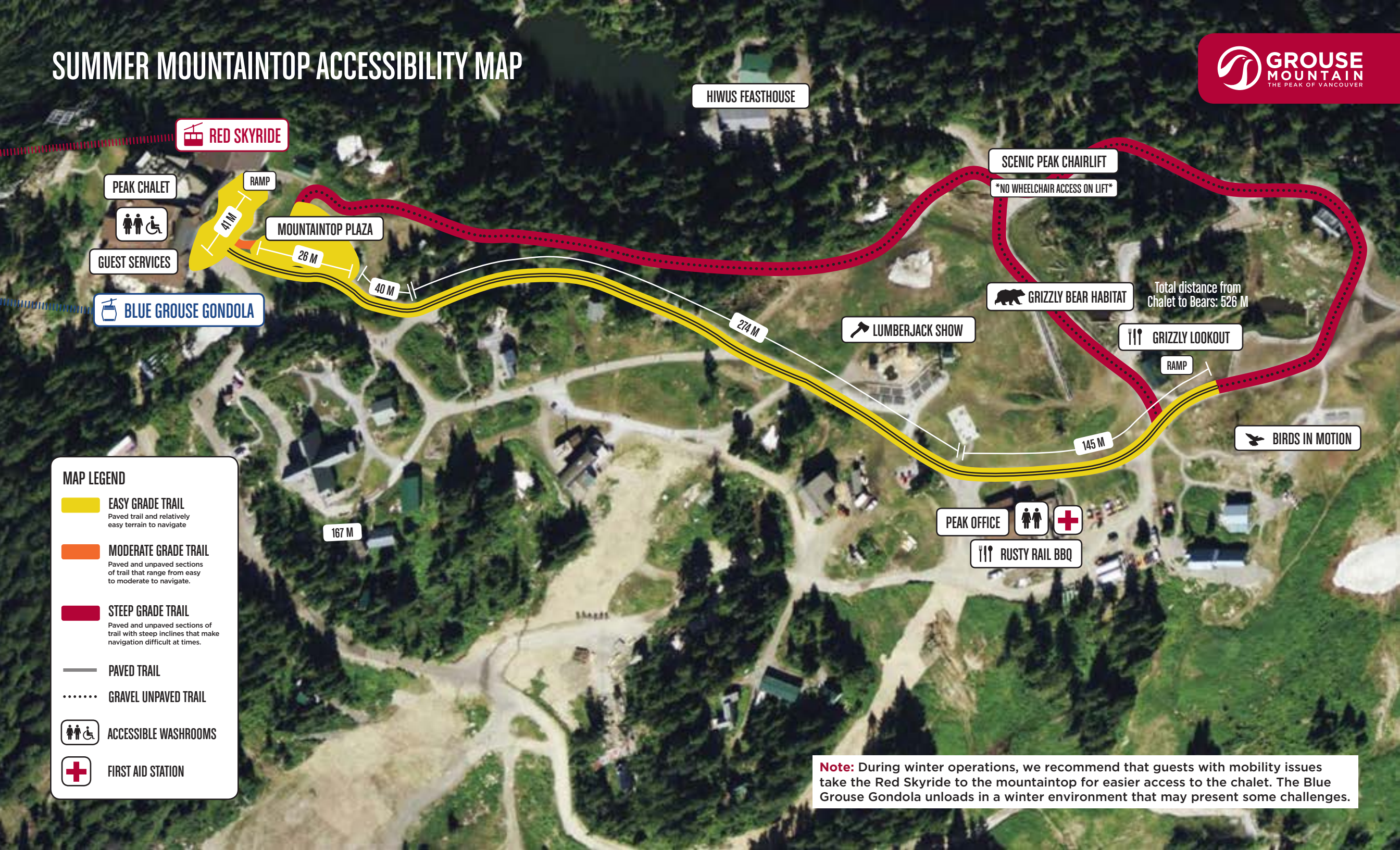
MAP LEGEND

-  **EASY GRADE TRAIL**
Paved trail and relatively easy terrain to navigate
-  **MODERATE GRADE TRAIL**
Paved trail that range from easy to moderate to navigate.
-  **STEEP GRADE TRAIL**
Paved trail with steep inclines that make navigation difficult at times.
-  **ACCESSIBLE WASHROOMS**
-  **COMPLIMENTARY ACCESSIBLE PERMIT PARKING (5)**
-  **PARKING PAYMENT KIOSK**
-  **STARBUCKS**
-  **STAIRS**

Note: During winter operations, we recommend that guests with mobility issues take the Red Skyride to the mountaintop for easier access to the chalet. The Blue Grouse Gondola unloads in a winter environment that may present some challenges.



SUMMER MOUNTAINTOP ACCESSIBILITY MAP



HIWUS FEASTHOUSE

RED SKYRIDE

PEAK CHALET

RAMP



GUEST SERVICES

MOUNTAINTOP PLAZA

41 M

26 M

40 M

BLUE GROUSE GONDOLA

274 M

SCENIC PEAK CHAIRLIFT

NO WHEELCHAIR ACCESS ON LIFT

GRIZZLY BEAR HABITAT

Total distance from Chalet to Bears: 526 M

LUMBERJACK SHOW

GRIZZLY LOOKOUT

RAMP

145 M

BIRDS IN MOTION

167 M

PEAK OFFICE



RUSTY RAIL BBQ

MAP LEGEND

EASY GRADE TRAIL
Paved trail and relatively easy terrain to navigate

MODERATE GRADE TRAIL
Paved and unpaved sections of trail that range from easy to moderate to navigate.

STEEP GRADE TRAIL
Paved and unpaved sections of trail with steep inclines that make navigation difficult at times.

PAVED TRAIL

GRAVEL UNPAVED TRAIL

ACCESSIBLE WASHROOMS

FIRST AID STATION

Note: During winter operations, we recommend that guests with mobility issues take the Red Skyride to the mountaintop for easier access to the chalet. The Blue Grouse Gondola unloads in a winter environment that may present some challenges.